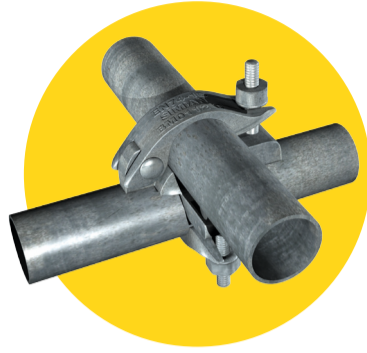


SCAFFOLDING COMPONENTS

RIGHT ANGLE / DOUBLE COUPLER

Used for ledgers, foot ties, handrails, bracing and ties. Markings on the fitting include EN74 and the load class. (For Class A, the safe working load is 6.1 kN and for Class B, 9.1kN)



PUTLOG COUPLER

Also referred to as Single, Clip, Wrap, Lap. Used on toeboard and transoms where boards are laid on top. A minimum safe working load of 0.63kN



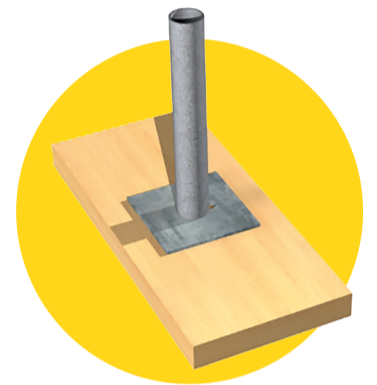
BAND & PLATE COUPLER

The band and plate is also called a Universal Fitting. It has a safe working load of 6.1kN. It can be used on a ledger, standard, transom or brace.



SOLEPAD

Sits beneath the baseplate. Dimensions vary from 450mm long to 4m long. It should be 225mm wide and 38mm thick.



BEAM CLAMPS

ASNZ 1576 Also referred to as Girder Coupler, Gravlok. Safe working load 30kN when hanging. Must be used in pairs. Slip through 2 couplers 6.1kN. Slip along beam 10kN and up to 15kN for suspended loads. Always check manufacturers data..



BOARD RETAINING CLAMP

Secures scaffold boards in place and is fixed to the transom. The holes allow boards to be nailed for added security, if needed - we recommend 2 per board.



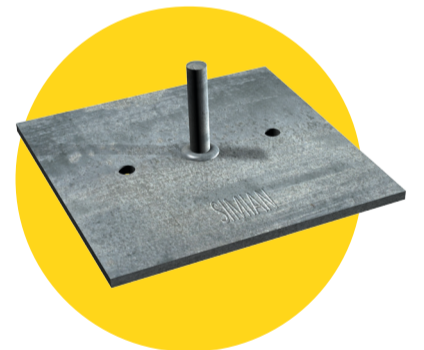
SPIGOT

Only connects 2 tubes vertically or in compression as it has no SWL in tension so should not be used horizontally and diagonally.



BASE PLATE

Placed beneath the standard to help displace the point loading. Minimum dimensions are 150mm x 150mm. If made of steel they should be 5mm thick and the shank should be a minimum of 50mm.



SLEEVE OR JOINT PIN

EN 74. The sleeve connects 2 tubes together either horizontally or vertically. Safe working load Class A 3.6kN and Class B 5.5kN.



SWIVEL COUPLER

Used on diagonal braces (e.g. Sway, ledger, façade and plan). EN74. Safe Working Load Class A 6.1kN, Class B 9.1kN.



Simian Skill provides a range of services to meet the diverse needs of the scaffolding and work at height industry across the globe. With a reputation for our **world-renowned scaffolding training** and health and safety consultancy, we are the **global experts** specialising in workplace access and working at height.

Website:
www.simian-risk.com

Telephone:
00 971 43 695 067

Email:
hello@simian-risk.com


SIMIAN SKILL
INTERNATIONAL SCAFFOLDING TRAINING